

Black Sea



Istanbul

Ankara

Troy



Cappadocia



Adiyaman

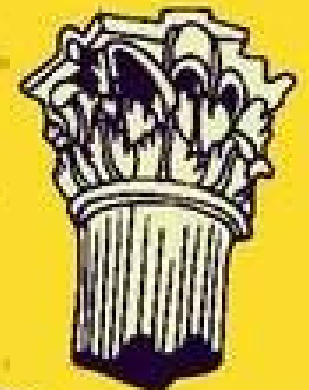


Mardin

Agri



Antalya



Mediterranean Sea

TURKEY

# FAST FACTS

- OFFICIAL NAME: Republic of Turkey
- FOUNDER: MUSTAFA KEMAL ATATÜRK
- CAPITAL: Ankara
- AREA: 302,535 square miles (783,562 square kilometers)
- POPULATION: 81,257,239
- OFFICIAL LANGUAGE: Turkish
- CURRENCY: Turkish Lira



Merhaba!



# TURKEY



**Geographically, the Republic of Turkey is a bridge between Europe and Asia. Due to its location, surrounded by sea on three sides, Turkey has always been the centre of great trade, silk and spice routes.**

# KONYA



Konya has been playing a central role being a cradle for many civilizations throughout the history.

It is one of the unique centers that combine its historical heritage and cultural accumulation with present time.

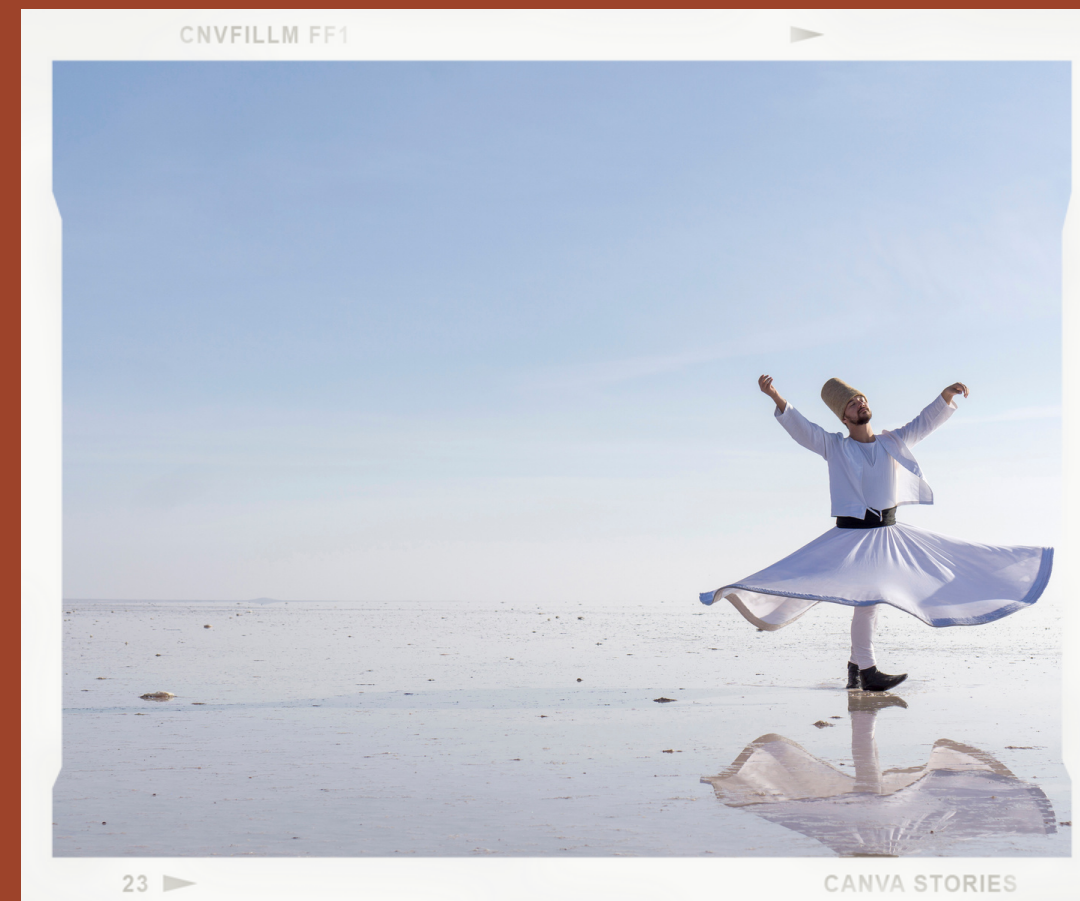
Archaeology shows that the Konya area is one of the most ancient settlements of Anatolia. Excavations in Catalhöyük and other places show the region was inhabited as far back as the Neolithic Period.

Konya province is considered to be the agricultural capital of our country with its large agricultural areas, irrigation facilities, geographical location.

# CULTURE AND TOURISM IN KONYA



Konya is a great city to visit for travellers interested in historical Turkish culture, architecture and mosques.





✦ **'Mevlana Museum'** holds the tomb of Mevlâna Jelaleddin Rumî, founder of the Mevlevi order of dervishes, commonly called the Whirling Dervishes.



✦ it is one of the most visited places in Konya. In this place, there are valuable manuscripts, Mevlana's clothes and patience stones.



**Beyşehir Lake**



**Kyoto Japanese Park**

**Karatay Madrasa**



**Konya Butterfly Valley**



**Çatalhöyük**



**Salt Lake**



**Şemsî Tebrîzî Mosque & Tomb**





# कोन्या

# TURKISH EDUCATION SYSTEM

In Turkey, compulsory  
education lasts **12 years**.

**1. Pre-primary School Education  
(3-5) (Optional)**

---

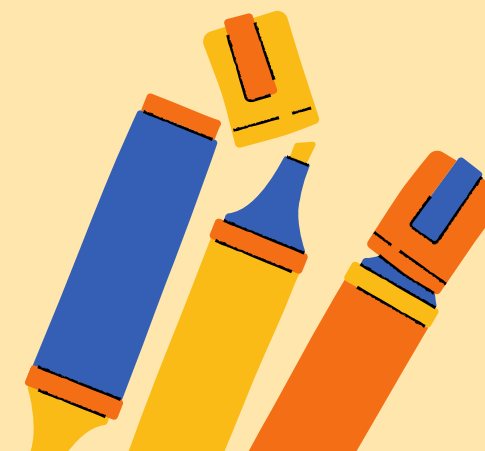
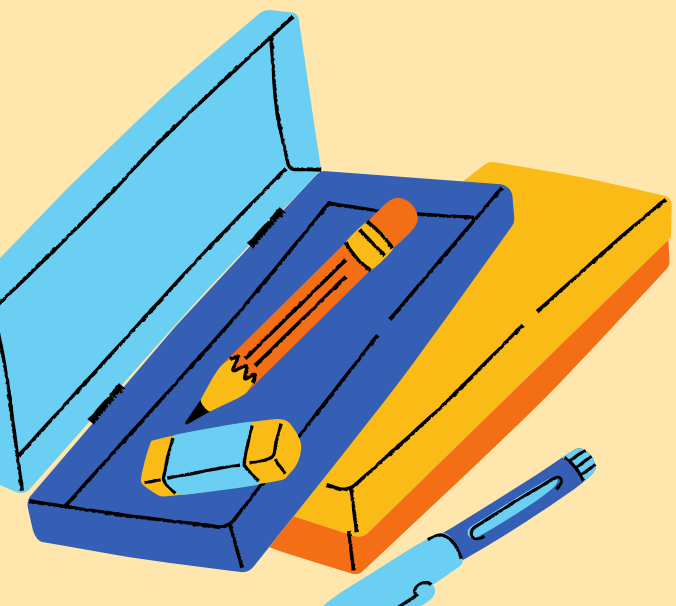
**2. Primary Education**

---

- ▶ **Elementary School (6-10)**
  - ▶ **Middle School (11-14)**
- 

**3. Secondary Education (15-19)**  
(high school)

---



# HIGH SCHOOLS

## A General High Schools

Anatolian High School

Science High School

Foreign Language High School

Anatolian Fine Arts High School

Anatolian Teacher Preparatory High Schools

## B Vocational-Technical High Schools

## Anatolian (Academic) High School

Educating language is Turkish.

English and German are compulsory foreign languages.

DEPARTMENTS

Maths-Science based

Turkish-Maths based

Foreign Language based

# ZEKİ ALTINDAĞ ANATOLIAN HIGH SCHOOL

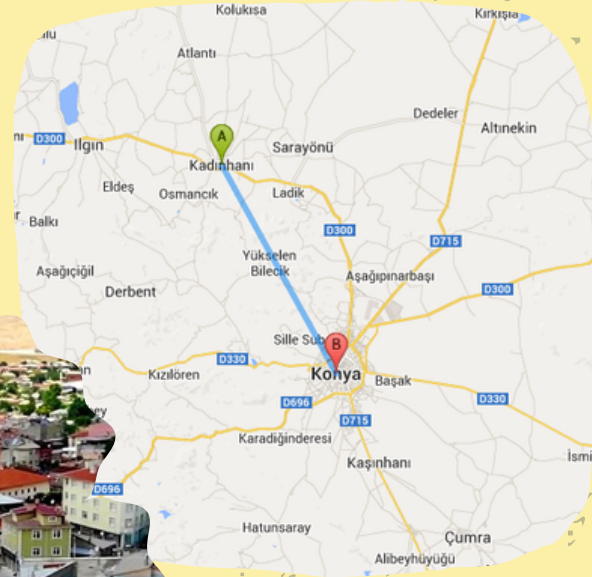


KONYA KADINHANI  
ZEKİ ALTINDAĞ ANADOLU LİSESİ

ZEKİ ALTINDAĞ ANADOLU LİSESİ

## BRIEF INFORMATION

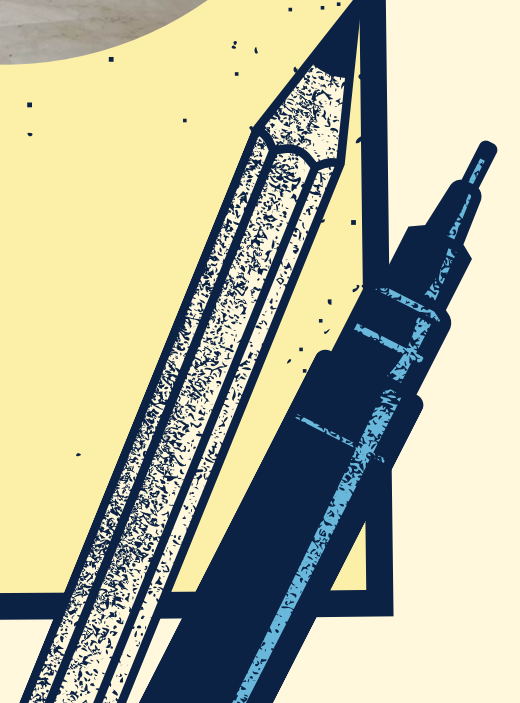
• Kadınhanı



• 33 teachers



• 500+ students aged between 15-19



STICK  
GLUE

TE

# DEPARTMANTS

**Maths-Science  
based**

**Turkish-Maths  
based**

**Foreign  
Language  
based**

physics, chemistry,  
biology,  
mathematics and  
geometry

Turkish Literature,  
Turkish language,  
geometry  
mathematics

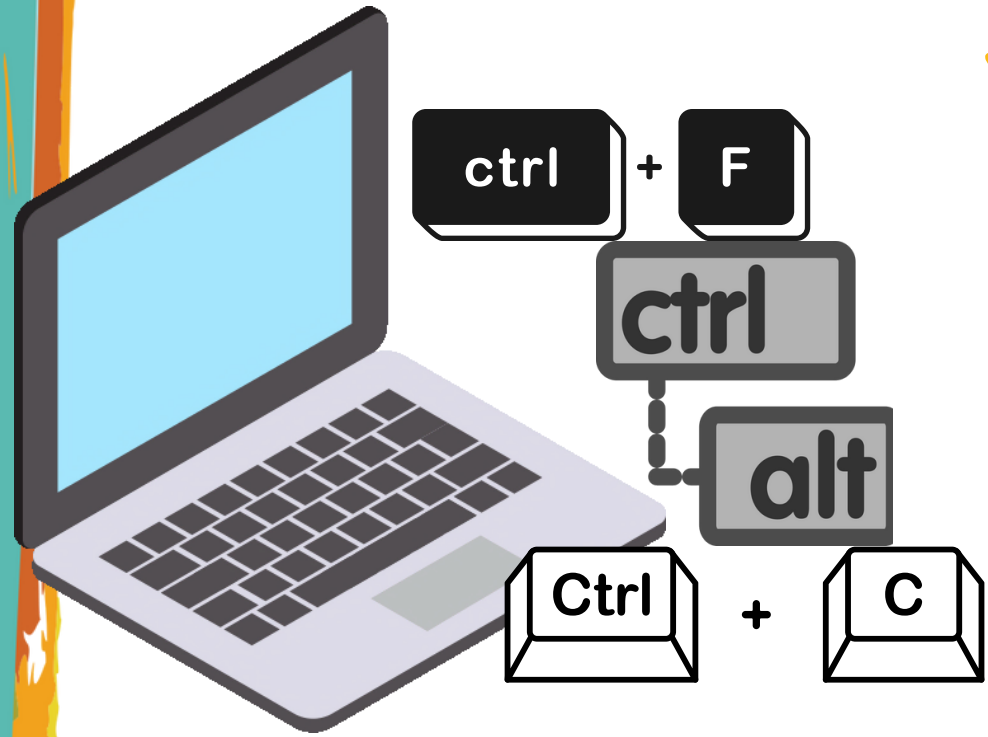
English, German,  
geography,  
history, Turkish  
Literature

**Common subjects;** Religious studies, History of the Turkish Revolution, Foreign languages, PE, Art, Music, etc.

**TEST**







**IT** in use;



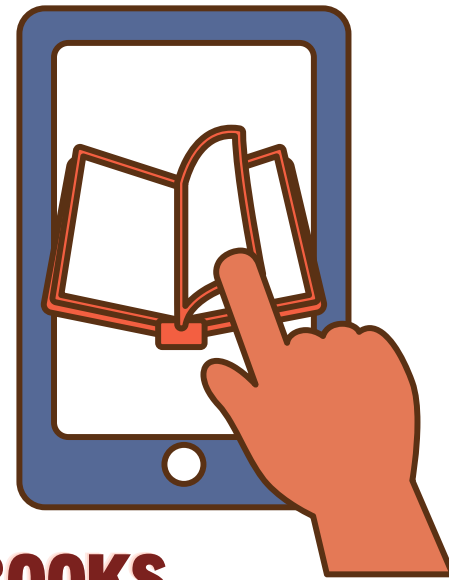
zoom







**IT  
IN  
USE;**



**E-BOOKS**



Thank  
you!